

# KALAS COLLECTION

## 2020 WOMEN

# ABOUT KALAS SPORTSWEAR



KALAS Sportswear is a leading manufacturer and distributor of premium cycling apparel throughout Europe. We are the custom cycle wear experts, producing premium quality kit in your own printed design. As well as custom ranges, we also have an extensive range of standard collection wear.

## **CHAMPIONS WEAR KALAS**

“British Cycling is delighted to be working with Kalas. They have demonstrated a detailed understanding of the performance demands of such a technical partnership. Having a kit supplier with their in-depth knowledge and high level of service is invaluable to the Great Britain Cycling Team.” Iain Dyer, Head Coach, Great Britain Cycling Team

KALAS is the choice of World and Olympic champions, national teams, Pro teams, Six Day London and thousands of cyclists across the globe. In addition to British Cycling we are also the trusted supplier for some of the world’s leading companies, including Budweiser Budvar, Marks & Spencer, Bayer, Skoda and Subaru. Our kit has been tested in some of the toughest races in the world, including Paris-Roubaix, Tour of Flanders and in 2017 will debut at the Tour de France.

## **DEVELOPMENT & INNOVATION**

We evolve daily, and constantly seek new ways to improve our products and service. To develop the next generation of cycle clothes we work together with professional sports people and renowned research institutions, such as the Technical University of Liberec, creating kit that meets the highest standards of functionality and comfort.

## **OUR HEART BEATS FOR CYCLING**

In Tabor, the mecca of Czech cycling, KALAS employs over 200 people from the local

community. The town has a rich cycling heritage and many staff are passionate cyclists. After a quarter of a century producing premium cycle wear we remain a family owned company.

# SUMMARY

## Kalas collection 2020 women

Quote number: **QUO-15360-S8Q2J0**

Offer valid until: **06.03.2020**

CODE	ITEM DESCRIPTION	PRICE (EXCL. VAT)	PCS	TOTAL
N50076-LS29	Jersey PRO 29   Razor   WOMEN	£73.00	1	£73.00
N51078-LS02	Jersey PRO 02   Vector   WOMEN	£64.50	1	£64.50
N50074-LS27	Jersey PRO 27   VeranoUltra   WOMEN	£73.00	1	£73.00
N50074-LN24	CYC Sleeveless jersey PRO 24   VeranoUltra   WOMEN	£73.00	1	£73.00
N51077-LS18	Jersey PRO 18   Shark   WOMEN	£169.00	1	£169.00
N51077-LL18	Jersey L/S PRO 18   Shark   WOMEN	£199.00	1	£199.00
N50054-LL79	Jersey L/S PRO 79   Elastico Thermo   WOMEN	£74.50	1	£74.50
N50111-LN01	Gilet PRO 01   W&W STRATOS/net   WOMEN	£59.90	1	£59.90
N50118-LN20	Gilet PRO 20   W&W STRATOS   WOMEN	£64.90	1	£64.90
N50219-LL09	Jacket PRO 09   W&W eVent   WOMEN	£119.00	1	£119.00
N50211-LL01	Jacket PRO 01   W&W STRATOS   WOMEN	£75.90	1	£75.90
N50072-LL78	Jacket PRO 78   W&W Diamond   WOMEN	£149.00	1	£149.00
N61065-LA02	Bib shorts PRO 02   GOFFRATO   WOMEN	£99.90	1	£99.90
N61065-LA04	Bib shorts PRO 04   GOFFRATO   Women	£86.00	1	£86.00
N60015-LA01	Shorts PRO 01   GOFFRATO   Women	£89.50	1	£89.50
N60015-LA03	Shorts PRO 03   GOFFRATO   Women	£66.50	1	£66.50
N61066-LA02	Bib shorts PRO 02   VeranoFlex X9   WOMEN	£99.90	1	£99.90
N61066-LA04	Bib shorts PRO 04   VeranoFlex X9   WOMEN	£86.00	1	£86.00
N61064-LA02	Bib shorts PRO 02   ROUBAIX   Women	£113.00	1	£113.00
N61064-LA04	Bib shorts PRO 04   ROUBAIX   Women	£90.00	1	£90.00
N61067-LA20	Bib shorts PRO 20   Shark   WOMEN	£169.00	1	£169.00
N61067-LA21	Bib shorts PRO 21   Shark   Women	£146.00	1	£146.00
N50077-LS80	Jersey PRO 80   W&W RainMem X3   WOMEN	£94.50	1	£94.50
N50077-LL80	Jersey L/S PRO 80   W&W RainMem X3   WOMEN	£104.50	1	£104.50
N60063-LA02	Bib shorts PRO 02   W&W RainMem X3   WOMEN	£122.00	1	£122.00

N60063-UA02	Bib shorts PRO 02   W&W RainMem X3	£99.00	1	£99.00
N60267-LA83	Bib tights PRO 83   W&W RainMem X3   WOMEN	£125.50	1	£125.50
N60267-LA58	Cycling Bib tights ARCO-PRO 58   W&W RainMem   WOMEN	£91.00	1	£91.00
N50078-LN12	Sleeveless jersey ELITE 12   Spinn   WOMEN	£37.50	1	£37.50
N50078-LS08	Jersey ELITE 08   Spinn   WOMEN	£45.50	1	£45.50
N51072-LS05	Jersey ELITE 05   Stripes   WOMEN	£53.00	1	£53.00
N50055-LL23	Jersey L/S ELITE 23   Flanders   WOMEN	£56.50	1	£56.50
N50113-LN19	Gilet ELITE 19   MicroFiber/net   WOMEN	£39.90	1	£39.90
N50126-LN03	Gilet ELITE 03   W&W Mission Flow   WOMEN	£51.90	1	£51.90
N50128-LN05	Gilet ELITE 05   W&W Mission Flow   WOMEN	£59.90	1	£59.90
N50213-LL19	Jacket ELITE 19   MicroFiber   WOMEN	£59.90	1	£59.90
N50248-LL06	Jacket ELITE 06   W&W Mission Flow   WOMEN	£83.50	1	£83.50
N50248-LZ07	Jacket ELITE-Z 07   W&W Mission Flow   WOMEN	£99.90	1	£99.90
N50249-LL06	Jacket ELITE 06   W&W Winter Flow   WOMEN	£99.90	1	£99.90
N60069-LA89	Bib shorts ELITE 89   Lycra POWER   WOMEN	£81.00	1	£81.00
N60069-LA50	Bib shorts ELITE 50   Lycra POWER   WOMEN	£58.00	1	£58.00
N60064-LA52	Bib shorts ELITE 52   ROUBAIX   WOMEN	£83.50	1	£83.50
N60064-LA51	Bib shorts ELITE 51   ROUBAIX   WOMEN	£60.50	1	£60.50
N60018-LA85	Shorts ELITE 85   Lycra POWER   Women	£76.50	1	£76.50
N60018-LA71	Shorts ELITE 71   Lycra POWER   WOMEN	£53.50	1	£53.50
N60169-LA52	3/4 bib tights ELITE 52   Lycra POWER   WOMEN	£84.50	1	£84.50
N60169-LA51	3/4 bib tights ELITE 51   Lycra POWER   WOMEN	£62.50	1	£62.50
N60164-LA52	3/4 bib tights ELITE 52   ROUBAIX   WOMEN	£87.00	1	£87.00
N60164-LA51	3/4 bib tights ELITE 51   ROUBAIX   WOMEN	£65.00	1	£65.00
N60118-LA78	3/4 tights ELITE 78   Lycra POWER   Women	£81.00	1	£81.00
N60118-LA77	3/4 tights ELITE 77   Lycra POWER   Women	£58.00	1	£58.00
N60113-LA78	3/4 tights ELITE 78   ROUBAIX   Women	£83.50	1	£83.50
N60113-LA77	3/4 tights ELITE 77   ROUBAIX   Women	£60.50	1	£60.50
N60266-LA88	Bib tights ELITE 88   ROUBAIX   WOMEN	£94.00	1	£94.00
N60266-LA53	Bib tights ELITE 53   ROUBAIX   WOMEN	£72.00	1	£72.00
N60266-LA90	Bib tights ELITE 90   ROUBAIX   WOMEN	£60.50	1	£60.50
N60213-LA80	Tights ELITE 80   ROUBAIX   Women	£86.50	1	£86.50
N60213-LA79	Tights ELITE 79   ROUBAIX   Women	£63.50	1	£63.50
N60213-LA45	Tights ARCO-ELITE 45   Roubaix   WOMEN	£52.00	1	£52.00

---

<b>Subtotal:</b>	<b>£4 987.90</b>
<b>VAT:</b>	<b>£997.58</b>
<b>Total:</b>	<b>£5 985.48</b>

---

# CONDITIONS AND TERMS

---

- the start-up cost for a design made in our **on-line designer** [KalasCreator](#) is a one-time payment £49, which includes digital remake of logos and colours, and the printing process, this start-up cost is not charged on re-orders
- the start-up cost for **a fully new design** created by our graphic designers is £99, which includes digital remake of logos and colours, and the printing process, this start-up cost is not charged on re-orders
- individual **printing of names**, flags or numbers: a surcharge of £4 for every item
- the shipment of the clothing is **free of charge** with orders above £500
- the manufacture time is between **4–6 weeks**, counting from the confirmation of your order. Delivery time takes between 3–5 calendar days from shipment date.
- no additional changes in sizes or products can be made after the order confirmation
- we want to ensure you are completely happy with your new design. For this reason we include up to three rounds of design amends. If your design requires more than three rounds of changes then additional charges may apply

# PRODUCTS



## Jersey PRO 29 | Razor | WOMEN

Code: N50076-LS29

PRICE (excl. VAT): £73.00

This jersey has been designed to meet the demands of professional teams and takes high performance cycle wear to a new level. The Razor jersey incorporates extremely lightweight and breathable fabrics and is constructed in an aerodynamic form fit to reduce air drag when in the tuck riding position. No-compromise, the ultimate racing jersey that focuses on one thing only, pure performance.

### MATERIAL: Razor

- Lightweight and breathable Razor fabrics that have been developed for racing wear
- Mesh side panels for maximum air flow
- Active seams provide better elasticity and deliver perfect fit
- Hidden semi-autolock zipper ensures easy opening and closing with one hand
- Longer sleeves with bonded edge hem to reduce drag
- Silicone elastic waistband to prevent your top from riding up
- Pyramid shape of the three-compartment pocket allows easy access
- Inner removable water-resistant pouch for your valuables.



## Jersey PRO 02 | Vector | WOMEN

Code: N51078-LS02

PRICE (excl. VAT): £64.50

The Vector jersey is made from durable, quick-drying material. Uniquely for our PRO collection, this jersey comes in a standard cut, so is looser fitting than other PRO jerseys.

### MATERIAL: Vector

- Active seams provide better elasticity for perfect fit.
- Hidden semi-autolock zipper ensures easy opening and closing with one hand.
- Sleeves from a breathable and elastic fabric for optimal comfort and fit.
- Silicone elastic waistband to prevent your top from riding up.
- Pyramid shape of the three-compartment pocket allows easy access.
- Inner removable water-resistant pouch for your valuables.



## Jersey PRO 27 | VeranoUltra | WOMEN

Code: N50074-LS27

PRICE (excl. VAT): £73.00

When the temperature rises above 25C it can feel unpleasant riding in a regular cycling jersey. Therefore, we have come up with an ultralight summer jersey, Verano Ultra, featuring panels made from a breathable material that will give you excellent moisture management for the heat of summer. An aerodynamic construction of the jersey ensures that you will not only stay cool but also fast.

### MATERIAL: Verano Ultra

- Lightweight and highly breathable Verano Ultra fabric.
  - Mesh inserts on the shoulders give maximum ventilation.
  - Active seams provide better elasticity and deliver perfect fit.
  - Hidden semi-autolock zipper ensures easy opening and closing with one hand.
  - Longer sleeves with bonded edge hem to reduce drag.
  - Silicone elastic waistband to prevent your top from riding up.
  - Pyramid shape of the three-compartment pocket allows easy access.
  - Inner removable water-resistant pouch for your valuables.
- Please note: It is advisable to use sun cream underneath.





## CYC Sleeveless jersey PRO 24 | VeranoUltra | WOMEN

Code: N50074-LN24

**PRICE (excl. VAT):** £73.00

**MATERIAL:** Verano Ultra



## Jersey PRO 18 | Shark | WOMEN

Code: N51077-LS18

**PRICE (excl. VAT):** £169.00

For the really resilient cyclists who do not get discouraged by miserable weather or have to face up the rain during a race, we have designed a fully waterproof jersey – Shark. It is constructed in a streamlined race fit that will enhance the aerodynamics even in the rough weather conditions. With a high level of water resilience and excellent breathable characteristics you will get a superior garment that will keep you warm and dry on the rainy days.

**MATERIAL:** W&W Shark

- Waterproof and breathable Shark fabric with a brushed liner on the inside.
- Low tail to keep road spray at bay.
- High, close-fitting collar to protect your neck.
- Hidden semi-autolock zipper ensures easy opening and closing with one hand.
- Silicone elastic waistband to prevent your top from riding up.
- Three back pockets with mesh drainage at the bottom.
- Reflective details to increase visibility.



## Jersey L/S PRO 18 | Shark | WOMEN

Code: N51077-LL18

**PRICE (excl. VAT):** £199.00

For the really resilient cyclists who do not get discouraged by miserable weather or have to face up the rain during a race, we have designed a fully waterproof jersey – Shark. It is constructed in a streamlined race fit that will enhance the aerodynamics even in the rough weather conditions. With a high level of water resilience and excellent breathable characteristics you will get a superior garment that will keep you warm and dry on the rainy days.

**MATERIAL:** W&W Shark

- Waterproof and breathable Shark fabric with a brushed liner on the inside.
- Low tail to keep road spray at bay.
- High, close-fitting collar to protect your neck.
- Hidden semi-autolock zipper ensures easy opening and closing with one hand.
- Silicone elastic waistband to prevent your top from riding up.
- Three back pockets with mesh drainage at the bottom.
- Reflective details to increase visibility.



## Jersey L/S PRO 79 | Elastico Thermo | WOMEN

Code: N50054-LL79

**PRICE (excl. VAT): £74.50**

This stylish aerodynamic long-sleeve jersey has been designed at the request of the professional teams. The jersey is made from the delicate and elastic material with brushed fibre on the reverse side. The great stretchiness and light weight provides maximum comfort while riding.

### **MATERIAL:** Elastico Thermo

- Under-sleeve inserts made from carbon fibre fabric.
- Silicone elastic waistband to prevent your top from riding up.
- Reflective details to increased visibility.
- Long overlaid zipper provides continuity of your design.



## Gilet PRO 01 | W&W STRATOS/net | WOMEN

Code: N50111-LN01

**PRICE (excl. VAT): £59.90**

The impressively light STRATOS gilet offers a close fitting shape, and thanks to excellent packability it becomes an indispensable piece of kit when riding in changeable weather conditions. The front panel is made from wind and waterproof fabric to protect your core from light rain and road spray, while the back part features mesh panelling to improve breathability.

### **MATERIAL:** W&W STRATOS

- Wind-proof and water-resistant STRATOS membrane.
- Water column: >10 000 mm.
- Breathability: > 6000 – 8000 g/m/24h.
- Hidden, semi-autolock zipper ensures easy opening with one hand.
- Inside collar made from mesh material to ensure better moisture management.
- Silicone elastic waistband to prevent your top from riding up.
- Low tail to keep road spray at bay.
- Reflective details to increase visibility.



## Gilet PRO 20 | W&W STRATOS | WOMEN

Code: N50118-LN20

**PRICE (excl. VAT): £64.90**

The impressively light STRATOS gilet offers a close fitting shape, and thanks to excellent packability it becomes an indispensable piece of kit when riding in changeable weather conditions. The front and back panel is made from wind and waterproof fabric to protect your core from light rain and road spray.

### **MATERIAL:** W&W STRATOS

- Wind-proof and water-resistant STRATOS membrane.
- Water column: >10 000 mm.
- Breathability: > 6000 – 8000 g/m/24h.
- Hidden, semi-autolock zipper ensures easy opening with one hand.
- Inside collar made from mesh material to ensure better moisture management.
- Silicone elastic waistband to prevent your top from riding up.
- Low tail to keep road spray at bay.
- Reflective details to increase visibility.



## Jacket PRO 09 | W&W eVent | WOMEN

Code: N50219-LL09

**PRICE (excl. VAT): £119.00**

The W&W eVent jacket has been designed specifically for really Wet & Windy conditions. The jacket is constructed using an innovative ultra-lightweight membrane. Important features, like the fully tape-sealed seams, elongated tail and waterproof zipper give you the best chance of reaching your destination warm and dry. The reflective elements improve visibility in poor weather conditions.

### **MATERIAL: W&W EVENT**

- Technologically advanced W&W eVent membrane.
- Water column: >20 000 mm.
- Breathability: > 20 000 g/m/24h.
- Inside collar made from mesh material to ensure better moisture management.
- Silicone elastic waistband to prevent your top from riding up.
- Low tail to keep road spray at bay.
- Reflective details to increase visibility.
- Fully tape-sealed seams to keep the rain out.



## Jacket PRO 01 | W&W STRATOS | WOMEN

Code: N50211-LL01

**PRICE (excl. VAT): £75.90**

With this piece of kit neither the wind nor light rain showers will spoil your ride again. Beat the miserable weather with our extremely lightweight STRATOS jacket. The jacket is constructed in a close-fitting cut and features elastic rubber at the end of sleeves to prevent the cold and wind from entering.

### **MATERIAL: W&W STRATOS**

- Wind-proof and water-proof STRATOS membrane.
- Water column: >10 000 mm.
- Breathability: > 6000 – 8000 g/m/24h.
- Hidden semi-autolock zipper enables easy opening with one hand.
- Inside collar made from mesh material to ensure better moisture management.
- Silicone elastic waistband to prevent your top from riding up.
- Low tail to keep road spray at bay.
- Reflective details to increase visibility.



## Jacket PRO 78 | W&W Diamond | WOMEN

Code: N50072-LL78

**PRICE (excl. VAT): £149.00**

This winter cycling jacket reflects the latest trends in the performance cycle wear thanks to a unique dual construction with an insulated balaclava to keep your head warm. Technical advanced membrane provides not only a maximum protection against wind and water but also an excellent breathability that prevents overheating.

### **MATERIAL: W&W Diamond**

- Innovative membrane water-proof fabric.
- Waterproof Rating >10 000 mm.
- Breathability > 11 000 g/m2/24hrs.
- Full length hidden zipper with a top overlap.
- Three compartment back pocket.
- Inner layer includes an insulated balaclava to protect your face.
- Reflective elements for increased visibility.



## Bib shorts PRO 02 | GOFFRATO | WOMEN

Code: N61065-LA02

**PRICE (excl. VAT): £99.90**

The result of testing and active collaboration with professional teams are the women's cycling bib-shorts made from compressive and highly functional Goffrato fabric. A new and carefully elaborated cut provides better aerodynamics and ensures maximum comfort when riding.

### **MATERIAL:** Goffrato

- Compressive and highly functional Goffrato fabric.
- Mesh inserts positioned on the back of thighs to provide better elasticity.
- Elastic bibs constructed with bonded seams for greater comfort.
- Flat seams to ensure maximum comfort.
- Anti-slip leg grippers stitched with reflective flat seams.
- Race radio back pocket.
- Endurance 3D Women pad.



## Bib shorts PRO 04 | GOFFRATO | Women

Code: N61065-LA04

**PRICE (excl. VAT): £86.00**

The result of testing and active collaboration with professional teams are the women's cycling bib-shorts made from compressive and highly functional Goffrato fabric. A new and carefully elaborated cut provides better aerodynamics and ensures maximum comfort when riding.

### **MATERIAL:** Goffrato

- Compressive and highly functional Goffrato fabric.
- Mesh inserts positioned on the back of thighs to provide better elasticity.
- Elastic bibs constructed with bonded seams for greater comfort.
- Flat seams to ensure maximum comfort.
- Anti-slip leg grippers stitched with reflective flat seams.
- Race radio back pocket.
- Zoom X Women pad.



## Shorts PRO 01 | GOFFRATO | Women

Code: N60015-LA01

**PRICE (excl. VAT): £89.50**

### **MATERIAL:** Goffrato



## Shorts PRO 03 | GOFFRATO | Women

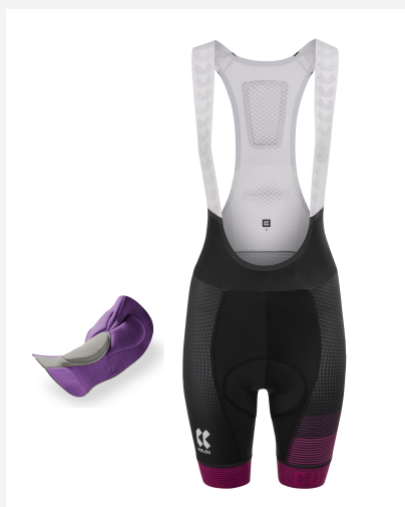
Code: N60015-LA03

**PRICE (excl. VAT): £66.50**

The result of testing and active collaboration with professional teams are the new ladies cycling shorts without bibs, made from compressive and highly functional Goffrato fabric. A new and carefully elaborated cut provides better aerodynamics and ensures maximum comfort when riding.

### **MATERIAL:** Goffrato

- Compressive and highly functional Goffrato fabric.
- Mesh inserts positioned on the back of thighs to provide better elasticity.
- Flat seams to ensure maximum comfort.
- Anti-slip leg grippers stitched with reflective flat seams.
- Zoom X women pad.



## Bib shorts PRO 02 | VeranoFlex X9 | WOMEN

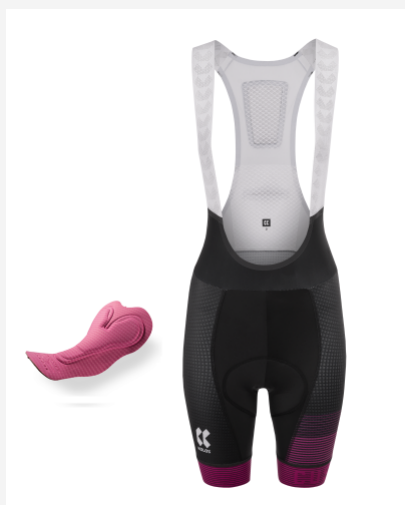
Code: N61066-LA02

**PRICE (excl. VAT): £99.90**

The result of testing and active collaboration with professional teams are the new cycling shorts made from elastic and highly breathable fabric Verano Flex. A new and carefully elaborated braces ensure a comfortable fit and strategically placed inserts provide breathability.

### **MATERIAL:** Verano Flex

- Light and breathable Verano Flex fabric designed for summer.
- Mesh inserts positioned on the back of thighs to provide better elasticity.
- Elastic bibs constructed with bonded seams.
- Flat seams to ensure maximum comfort.
- Anti-slip leg grippers stitched with reflective flat seams.
- Race radio back pocket.
- Endurance 3D Women pad.



## Bib shorts PRO 04 | VeranoFlex X9 | WOMEN

Code: N61066-LA04

**PRICE (excl. VAT): £86.00**

The result of testing and active collaboration with professional teams are the new cycling shorts made from elastic and highly breathable fabric Verano Flex. A new and carefully elaborated braces ensure a comfortable fit and strategically placed inserts provide breathability.

### **MATERIAL:** Verano Flex

- Light and breathable Verano Flex fabric designed for summer.
- Mesh inserts positioned on the back of thighs to provide better elasticity.
- Elastic bibs constructed with bonded seams.
- Flat seams to ensure maximum comfort.
- Anti-slip leg grippers stitched with reflective flat seams.
- Race radio back pocket.
- Zoom X pad women.





## Bib shorts PRO 02 | ROUBAIX | Women

Code: N61064-LA02

**PRICE (excl. VAT):** £113.00

The result of testing and active collaboration with professional teams are the new women cycling bib-shorts made from compressive and thermally insulated Roubaix fabric. A new and carefully elaborated cut provides better aerodynamics and ensures maximum comfort when riding.

**MATERIAL:** Roubaix

- Flat seams.
- Thermally insulated Roubaix fabric.
- Reflective elements for better safety.
- Endurance 3D women pad.



## Bib shorts PRO 04 | ROUBAIX | Women

Code: N61064-LA04

**PRICE (excl. VAT):** £90.00

The result of testing and active collaboration with professional teams are the new women cycling bib-shorts made from compressive and thermally insulated Roubaix fabric. A new and carefully elaborated cut provides better aerodynamics and ensures maximum comfort when riding.

**MATERIAL:** Roubaix

- Flat seams.
- Thermally insulated Roubaix fabric.
- Reflective elements for better safety.
- Zoom X women pad.



## Bib shorts PRO 20 | Shark | WOMEN

Code: N61067-LA20

**PRICE (excl. VAT):** £169.00

For the really resilient cyclists who do not get discouraged by miserable weather or have to face up the rain during a race, we have designed a fully waterproof bib-shorts Shark. With a high level of water resilience and excellent breathable characteristics you will get a superior garment that will keep you warm and dry on the rainy days.

**MATERIAL:** W&W Shark

- Waterproof and breathable Shark fabric with a brushed liner on the inside.
- Intricate construction of bibs for a perfect fit.
- Legs finished with inner anti-slippery band.
- Flat seams ensure maximum comfort.
- Reflective details to increase visibility.
- Endurance 3D Women pad.



## Bib shorts PRO 21 | Shark | Women

Code: N61067-LA21

**PRICE (excl. VAT): £146.00**

For the really resilient cyclists who do not get discouraged by miserable weather or have to face up the rain during a race, we have designed a fully waterproof bib-shorts Shark. With a high level of water resilience and excellent breathable characteristics you will get a superior garment that will keep you warm and dry on the rainy days.

**MATERIAL:** W&W Shark

- Waterproof and breathable Shark fabric with a brushed liner on the inside.
- Intricate construction of bibs for a perfect fit.
- Legs finished with inner anti-slippery band.
- Flat seams ensure maximum comfort.
- Reflective details to increase visibility.
- Zoom X Women pad.



## Jersey PRO 80 | W&W RainMem X3 | WOMEN

Code: N50077-LS80

**PRICE (excl. VAT): £94.50**

A revolutionary innovation in cycle wear development. Created in close-fitting cut and from water-resistant membrane material this jersey designed for chilly and rainy weather will ensure a maximum protection and comfort without losing any speed.

**MATERIAL:** RainMem X3

- Superelastic and insulated membrane material.
- Waterproof rating: > 15 000 mm.
- Breathability: > 30 000 g / m<sup>2</sup> /24hr.
- Elongated back cut for better protection against the elements.
- Elastic sleeves finished with "fullgrip" elastic cuff that is stitched with reflective flatlock seam.
- Silicone elastic waistband to prevent your top from riding up.
- Three back pockets.
- Reflective elements for increased visibility.



## Jersey L/S PRO 80 | W&W RainMem X3 | WOMEN

Code: N50077-LL80

**PRICE (excl. VAT): £104.50**

Neither cold, nor rain will discourage you from putting in the first kilometres in the winter season. This long sleeved membrane cycling jersey keeps you warm on the bike in the unfavourable weather conditions while it has exceptional breathability.

**MATERIAL:** RainMem X3

- Elastic and insulated membrane fabrics.
- Waterproof rating: 15 000 mm.
- Breathability: 30 000 g / m<sup>2</sup> /24hr.
- Water-repellent and wind-resistant.
- High collar offers protection for your neck.
- Reflective elements for increased visibility.



## Bib shorts PRO 02 | W&W RainMem X3 | WOMEN

Code: N60063-LA02

**PRICE (excl. VAT): £122.00**

The innovative ladies membrane bib-shorts are designed especially for riding your bike on rainy and chilly days. The thermally insulated RainMem material is water-resistant as well as highly breathable. Along with other RainMem accessories you will be perfectly equipped for the nasty weather conditions.

**MATERIAL:** RainMem X3

- Elastic and thermally insulated membrane fabrics.
- Waterproof rating: 15 000 mm.
- Breathability: 30 000 g / m2 /24hr.
- Water and wind-resistant characteristics.
- Braces made out of Roubaix material.
- Legs finished with "fullgrip" elastic gripper that is stitched with reflective flatlock seam.
- Flats seams ensuring maximum comfort.
- Reflective elements for increased visibility.
- Endurance 3D Women.



## Bib shorts PRO 02 | W&W RainMem X3

Code: N60063-UA02

**PRICE (excl. VAT): £99.00**

The innovative women's membrane bib-shorts are designed especially for riding your bike on rainy and chilly days. The thermally insulated RainMem material is water-resistant as well as highly breathable. Along with other RainMem accessories you will be perfectly equipped for the nasty weather conditions.

**MATERIAL:** RainMem X3

- elastic and thermally insulated membrane fabrics
- waterproof rating: 15 000 mm
- breathability: 30 000 g / m2 /24hr
- water and wind-resistant characteristics
- braces made out of Roubaix material
- legs finished with "fullgrip" elastic band that is stitched with reflective flatlock seam
- flats seams ensuring maximum comfort
- reflective elements for increased safety
- Extended leg length
- ENDURANCE 3D women



## Bib tights PRO 83 | W&W RainMem X3 | WOMEN

Code: N60267-LA83

**PRICE (excl. VAT): £125.50**

The exclusive ladies membrane bib-tights are designed especially for riding your bike on rainy and chilly days. The thermally insulated RainMem material is water-resistant as well as highly breathable. Along with other RainMem accessories you will be perfectly equipped for the nasty weather conditions.

**MATERIAL:** RainMem X3

- Elastic and thermally insulated membrane fabrics.
- Waterproof rating: 15 000 mm.
- Breathability: 30 000 g / m2 /24hr.
- Water and wind-resistant characteristics.
- Braces made out of Roubaix material.
- Legs finished with "fullgrip" elastic band that is stitched with reflective flatlock seam.
- Flats seams ensuring maximum comfort.
- Reflective elements for increased visibility.
- Endurance 3D Women pad.





## Cycling Bib tights ARCO-PRO 58 | W&W RainMem | WOMEN

Code: N60267-LA58

**PRICE (excl. VAT):** £91.00

The exclusive ladies membrane bib-tights are designed especially for riding your bike on rainy and chilly days. The thermally insulated RainMem material is water-resistant as well as highly breathable. Along with other RainMem accessories you will be perfectly equipped for the nasty weather conditions.

**MATERIAL:** RainMem X3

- elastic and thermally insulated membrane fabrics
- waterproof rating: 15 000 mm
- breathability: 30 000 g / m<sup>2</sup> /24hr
- water and wind-resistant characteristics
- braces made out of Roubaix material
- legs finished with "fullgrip" elastic band that is stitched with reflective flatlock seam
- flats seams ensuring maximum comfort
- reflective elements for increased safety
- no pad



## Sleeveless jersey ELITE 12 | Spinn | WOMEN

Code: N50078-LN12

**PRICE (excl. VAT):** £37.50

Best-selling jersey made from highly functional Spinn fabrics, which are characterised by their lightweight fabric, breathability and great wicking properties.

**MATERIAL:** Spinn

- Elastic sleeves finished with "fullgrip" elastic band that is stitched with reflective flatlock seam.
- Three back pockets with a small opening for an earpiece cable.
- Reflective elements for increased safety.



## Jersey ELITE 08 | Spinn | WOMEN

Code: N50078-LS08

**PRICE (excl. VAT):** £45.50

Best-selling jersey made from highly functional Spinn fabrics, which are characterised by their lightweight fabric, breathability and great wicking properties.

**MATERIAL:** Spinn

- Elastic sleeves finished with "fullgrip" elastic cuff that is stitched with reflective flatlock seam.
- Elastic inserts under the sleeves for a great anatomic fit.
- Three back pockets with a small opening for an earpiece cable.
- Reflective elements for increased visibility.
- Inner removable water-resistant pocket.



## Jersey ELITE 05 | Stripes | WOMEN

Code: N51072-LS05

**PRICE (excl. VAT): £53.00**

This jersey combines two highly functional materials and is constructed in a streamlined design and a skin-tight anatomical cut. We have used a stretchy fabric on the front and back panels to provide breathability, and the Stripes material on the shoulders to improve aerodynamic efficiency on your bike.

### **MATERIAL:** STRIPES

- Sleeves with an invisible ending.
- Silicone elastic waistband to prevent your top from riding up.
- Three back pockets with a small opening for an earpiece cable.
- Reflective elements for increased safety.
- Inner removable water-resistant pouch.



## Jersey L/S ELITE 23 | Flanders | WOMEN

Code: N50055-LL23

**PRICE (excl. VAT): £56.50**

The insulated jersey Kalas designed for changeable weather. An indispensable accessory for any serious cyclist.

### **MATERIAL:** Flanders

- Insulated and breathable Flanders material.
- Silicone waistband to prevent your top from riding up.
- Three-compartment back pocket with opening for headphones.
- Reflective elements for increased visibility.
- Inner removable water-proof pocket.



## Gilet ELITE 19 | MicroFiber/net | WOMEN

Code: N50113-LN19

**PRICE (excl. VAT): £39.90**

The Microfiber front and mesh back are designed with fast downhill descents in mind. This Keeps the wind out but allows your body to breathe.

### **MATERIAL:** Microfiber

- Sides and underarms made from elastic fabric to deliver a perfect fit.
- High collar offers protection for your neck.
- Narrow elastic waistband to prevent your top from riding up.
- Reflective details to increase visibility.



## Gilet ELITE 03 | W&W Mission Flow | WOMEN

Code: N50126-LN03

**PRICE (excl. VAT): £51.90**

If you are looking for a warm layer and at the same time a protection against wind and rain, this gilet could be perfect for you. Made from lightweight, three-layer membrane, the W&W Mission Flow gilet will become an indispensable bit of kit for your spring and autumn rides.

### **MATERIAL:** W&W MISSION FLOW

- Rear panel made from mesh fabric for better breathability.
- Water column: > 10 000 mm.
- Breathability: > 10 000 g / m<sup>2</sup> / 24 hr.
- Silicone waistband to prevent your top from riding up.
- Long underlaid zipper to protect against cold air and top overlap for increased comfort.
- Three-compartment back pocket.



## Gilet ELITE 05 | W&W Mission Flow | WOMEN

Code: N50128-LN05

**PRICE (excl. VAT): £59.90**

If you are looking for a warm layer and at the same time a protection against wind and rain, this gilet could be perfect for you. Made from lightweight, three-layer membrane, the W&W Mission Flow gilet will become an indispensable part for your spring and autumn rides.

### **MATERIAL:** W&W MISSION FLOW

- Constructed from the three layer-membrane.
- Water column: > 10 000 mm.
- Breathability: > 10 000 g / m<sup>2</sup> / 24 hr.
- Silicone waistband to prevent your top from riding up.
- Long underlaid zipper to protect against cold air and top overlap for increased comfort.
- Three-compartment back pocket.



## Jacket ELITE 19 | MicroFiber | WOMEN

Code: N50213-LL19

**PRICE (excl. VAT): £59.90**

Constructed with lightweight microfiber fabric with a micro perforated structure that facilitates fast drying and airflow. This is a windproof and water-repellent jacket that is extremely versatile and is perfect for changeable weather conditions.

### **MATERIAL:** Microfiber

- Sides and underarms are made from elastic fabric to deliver a perfect fit.
- High collar offers protection for your neck.
- Three pockets on the back.
- Narrow elastic waistband to prevent your top from riding up.
- Reflective details to increase visibility.



## Jacket ELITE 06 | W&W Mission Flow | WOMEN

Code: N50248-LL06

**PRICE (excl. VAT): £83.50**

Every cyclist knows how unpredictable the weather can be in spring or autumn. For this reason, we have come up with a jacket made out of lightweight, three-layer membrane. W&W Mission Flow provides protection against low temperatures and the elements.

### **MATERIAL:** W&W MISSION FLOW

- Lightweight membrane material.
- Waterproof rating: > 10 000 mm.
- Breathability: > 10 000 g / m<sup>2</sup> /24hr.
- Underarm panels in Power Lycra ensuring elasticity and breathability.
- Silicone elastic waistband to prevent your top from riding up.
- Full covered zipper with upper overlay.
- Three back pockets.
- Reflective elements for increased visibility.



## Jacket ELITE-Z 07 | W&W Mission Flow | WOMEN

Code: N50248-LZ07

**PRICE (excl. VAT): £99.90**

Every cyclist knows how unpredictable the weather can be in spring or autumn. For this reason, we have come up with a jacket made out of lightweight, three-layer membrane. W&W Mission Flow provides protection against low temperatures and the elements. Thanks to detachable sleeves this jacket can be easily transformed into a gilet, giving you two garments for the price of one.

### **MATERIAL:** W&W MISSION FLOW

- Lightweight membrane material.
- Waterproof rating: > 10 000 mm.
- Breathability: > 10 000 g / m<sup>2</sup> /24hr.
- Underarm panels in Power Lycra ensuring elasticity and breathability.
- Silicone elastic waistband to prevent your top from riding up.
- Full covered zipper with the upper overlay.
- Three back pockets.
- Reflective elements for increased visibility.



## Jacket ELITE 06 | W&W Winter Flow | WOMEN

Code: N50249-LL06

**PRICE (excl. VAT): £99.90**

Get the most out of winter riding with our W&W Winter Flow jacket. Our winter jacket will not only provide perfect protection against the cold and snow, but will also make sure that you won't overheat thanks to its high breathability.

### **MATERIAL:** W&W WINTER FLOW

- Fleece lined membrane material W&W Winter Flow.
- Water column: > 10 000 mm.
- Breathability: > 10 000 g / m<sup>2</sup> /24hr.
- Long underlaid zipper with a top overlap.
- Three-compartment back pockets.
- Reflective elements for increased visibility.



## Bib shorts ELITE 89 | Lycra POWER | WOMEN

Code: N60069-LA89

**PRICE (excl. VAT):** £81.00

These bibshorts are constructed from high quality, compressive Lycra Power fabric that demonstrates excellent elasticity and breathability. Mesh braces constructed in combination with solid straps on the front provide a perfect and precise fit.

**MATERIAL:** Lycra Power

- Elastic and breathable Lycra Power fabric that offers freedom of movement.
- Flat seams ensure maximum comfort.
- Anti-slip grippers around the legs to prevent riding up.
- Endurance 3D Women pad.



## Bib shorts ELITE 50 | Lycra POWER | WOMEN

Code: N60069-LA50

**PRICE (excl. VAT):** £58.00

These bibshorts are constructed from high quality, compressive Lycra Power fabric that demonstrates excellent elasticity and breathability. Mesh braces constructed in combination with solid straps on the front provide a perfect and precise fit.

**MATERIAL:** Lycra Power

- Elastic and breathable Lycra Power fabric that offers freedom of movement.
- Flat seams ensure maximum comfort.
- Anti-slip grippers around the legs to prevent riding up.
- Zoom X Women pad.



## Bib shorts ELITE 52 | ROUBAIX | WOMEN

Code: N60064-LA52

**PRICE (excl. VAT):** £83.50

These bib-shorts come from thermally insulated and breathable fabric, Roubaix, which will keep you warm and comfortable. The anatomically shaped cut offers good fitting.

**MATERIAL:** Roubaix

- thermally insulated Roubaix material
- silicone elastic leg gripper to prevent riding up
- flat seams ensuring maximum comfort while riding
- ENDURANCE 3D Women pad



## Bib shorts ELITE 51 | ROUBAIX | WOMEN

Code: N60064-LA51

**PRICE (excl. VAT): £60.50**

These bib-shorts come from thermally insulated and breathable fabric, Roubaix, which will keep you warm and comfortable. The anatomically shaped cut offers good fitting.

**MATERIAL:** Roubaix

- Thermally insulated Roubaix material.
- Silicone elastic leg gripper to prevent riding up.
- Flat seams ensuring maximum comfort while riding.
- Zoom X Women pad.



## Shorts ELITE 85 | Lycra POWER | Women

Code: N60018-LA85

**PRICE (excl. VAT): £76.50**

These ladies cycling shorts without bibs in a new aerodynamic cut are constructed from high quality and compressive Lycra Power fabric that is characteristic of excellent elasticity and breathability.

**MATERIAL:** Lycra Power

- Elastic and breathable Lycra Power textile that offers freedom of movement.
- Flat seams ensure maximum comfort.
- Anti-slip grippers around the legs to prevent riding up.
- ENDURANCE 3D WOMEN pad



## Shorts ELITE 71 | Lycra POWER | WOMEN

Code: N60018-LA71

**PRICE (excl. VAT): £53.50**

These women's cycling shorts without bibs are constructed from high quality and compressive Lycra Power fabric that is characteristic of excellent elasticity and breathability.

**MATERIAL:** Lycra Power

- Elastic and breathable Lycra Power textile that offers freedom of movement.
- Flat seams ensure maximum comfort.
- Anti-slip grippers around the legs to prevent riding up.
- Zoom X Women pad.





## 3/4 bib tights ELITE 52 | Lycra POWER | WOMEN

Code: N60169-LA52

**PRICE (excl. VAT): £84.50**

These 3/4 bib tights come in high quality and compressive Lycra Power fabric, which will keep you comfortable. The anatomically shaped cut offers a good fitting.

**MATERIAL:** Lycra Power

- Silicone elastic leg gripper to prevent riding up.
- Flat seams ensuring maximum comfort while riding.
- Reflective elements for increased visibility.
- ENDURANCE 3D Women pad.



## 3/4 bib tights ELITE 51 | Lycra POWER | WOMEN

Code: N60169-LA51

**PRICE (excl. VAT): £62.50**

These 3/4 bib tights come in high quality and compressive Lycra Power fabric, which will keep you comfortable. The anatomically shaped cut offers a good fitting.

**MATERIAL:** Lycra Power

- Silicone elastic leg gripper to prevent riding up.
- Flat seams ensuring maximum comfort while riding.
- Reflective elements for increased visibility.
- Zoom X Women pad.



## 3/4 bib tights ELITE 52 | ROUBAIX | WOMEN

Code: N60164-LA52

**PRICE (excl. VAT): £87.00**

These bib knickers come in an insulated and breathable fabric, Roubaix, which will keep you warm and comfortable. The anatomically shaped cut offers a good fitting.

**MATERIAL:** Roubaix

- thermally insulated Roubaix fabric
- silicone elastic leg gripper to prevent riding up
- flat seams ensuring maximum comfort while riding
- ENDURANCE 3D Women pad



## 3/4 bib tights ELITE 51 | ROUBAIX | WOMEN

Code: N60164-LA51

**PRICE (excl. VAT):** £65.00

These bib knickers come in an insulated and breathable fabric, Roubaix, which will keep you warm and comfortable. The anatomically shaped cut offers a good fitting.

**MATERIAL:** Roubaix

- Thermally insulated Roubaix fabric.
- Silicone elastic leg gripper to prevent riding up.
- Flat seams ensuring maximum comfort while riding.
- Zoom X Women pad.



## 3/4 tights ELITE 78 | Lycra POWER | Women

Code: N60118-LA78

**PRICE (excl. VAT):** £81.00

**MATERIAL:** Lycra Power



## 3/4 tights ELITE 77 | Lycra POWER | Women

Code: N60118-LA77

**PRICE (excl. VAT):** £58.00

These knickers without bibs come in stretchy Lycra Power fabrics. The anatomically shaped lady specific cut offers a great protection and comfort.

**MATERIAL:** Lycra Power

- wide elastic waistband specially developed for the ladies collection
- leg ending with comfortable elastic hem
- reflective elements for increased safety
- flat seams ensuring maximum comfort while riding
- Zoom X women pad





## 3/4 tights ELITE 78 | ROUBAIX | Women

Code: N60113-LA78

**PRICE (excl. VAT):** £83.50

**MATERIAL:** Roubaix



## 3/4 tights ELITE 77 | ROUBAIX | Women

Code: N60113-LA77

**PRICE (excl. VAT):** £60.50

These ladies bib knickers come in an insulated and breathable material Roubaix that will keep you warm and comfortable. The anatomically shaped lady specific cut offers a great fit.

**MATERIAL:** Roubaix

- insulated Roubaix material
- wide elastic waistband specially developed for the ladies collection
- leg ending with comfortable elastic hem
- reflective elements for increased safety
- flat seams ensuring maximum comfort while riding
- Zoom X women pad



## Bib tights ELITE 88 | ROUBAIX | WOMEN

Code: N60266-LA88

**PRICE (excl. VAT):** £94.00

The high-quality bib-tights protects your ankles, knees and hips against the cold and ensures perfect fit and comfortable ride.

**MATERIAL:** Roubaix

- Thermally insulated Roubaix material.
- Flat seams ensuring maximum comfort while riding.
- Reflective zippers on the outside of the legs for increased visibility.
- ENDURANCE 3D Women pad



## Bib tights ELITE 53 | ROUBAIX | WOMEN

Code: N60266-LA53

**PRICE (excl. VAT):** £72.00

The high-quality bib-tights protects your ankles, knees and hips against the cold and ensures perfect fit and comfortable ride.

**MATERIAL:** Roubaix

- Thermally insulated Roubaix material.
- Flat seams ensuring maximum comfort while riding.
- Reflective zippers on the outside of the legs for increased visibility.
- Zoom X Women pad.



## Bib tights ELITE 90 | ROUBAIX | WOMEN

Code: N60266-LA90

**PRICE (excl. VAT):** £60.50

The high-quality bib-tights protects your ankles, knees and hips against the cold and ensures perfect fit and comfortable ride.

**MATERIAL:** Roubaix

- Thermally insulated Roubaix material.
- Flat seams ensuring maximum comfort while riding.
- Reflective zippers on the outside of the legs for increased visibility.
- No pad



## Tights ELITE 80 | ROUBAIX | Women

Code: N60213-LA80

**PRICE (excl. VAT):** £86.50

**MATERIAL:** Roubaix



## Tights ELITE 79 | ROUBAIX | Women

Code: N60213-LA79

**PRICE (excl. VAT): £63.50**

The high-quality tights without bibs protects your ankles, knees and hips against cold while providing a perfect fit for ladies.

**MATERIAL:** Roubaix

- insulated Roubaix fabric
- wide elastic waistband specially developed for the ladies collection
- leg ending with comfortable elastic hem
- reflective elements for increased safety
- flat seams ensuring maximum comfort while riding
- Zoom X women pad



## Tights ARCO-ELITE 45 | Roubaix | WOMEN

Code: N60213-LA45

**PRICE (excl. VAT): £52.00**

The high-quality tights without bibs protects your ankles, knees and hips against cold while providing a perfect fit for ladies.

**MATERIAL:** Roubaix

- insulated Roubaix fabric
- wide elastic waistband specially developed for the ladies collection
- leg ending with comfortable elastic hem
- reflective elements for increased safety
- flat seams ensuring maximum comfort while riding
- ENDURANCE X Lady pad

# MATERIALS AND PADS

---



## Razor

---

Ultra-thin, quick-drying material, especially developed for racing purposes. This fabric offers excellent stretch and recovery, while providing great comfort. It is highly breathable and provides an aerodynamic fit.



## Vector

---

A very functional polyester material ensures fast moisture removal from the skin and makes sure that your jersey stays dry.



## Verano Ultra

---

A technical and soft mesh fabric that provides excellent breathable and moist wicking characteristics. Thanks to its light weight you will have a feeling that you are not wearing a high performance cycling kit.



## W&W Shark

---

A woven fabric that is widely used in high performance clothing to provide perfect waterproof parameters yet being very breathable. The membrane being sandwiched between two layers, outer layer with durable water repellent treatment and inner brushed lining for comfortable feeling.



## Elastico Thermo

---

New, thermally insulated material with high elasticity is ideal to use in production of long-sleeve cycling jerseys, where excellent flexibility ensures maximum comfort when riding.



## W&W STRATOS

---

An ultralight membrane gives an effective protection against the rain thanks to high values of waterproofness (> 8 000 mm) and a superior level of breathability (> 11 000 g/m/24h) will make sure that you do not overheat while riding your bike.



## W&W EVENT

---

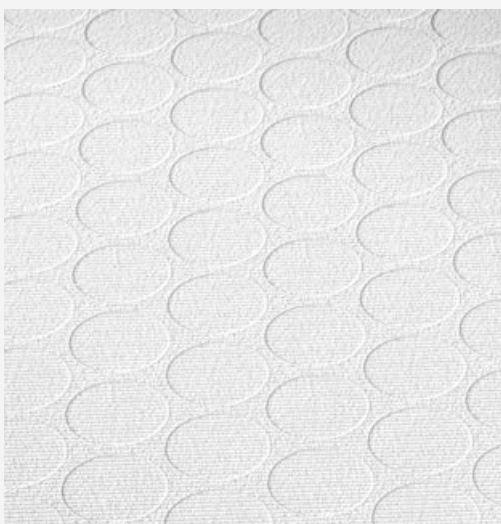
eVent fabrics revolutionized waterproof apparel with the introduction of an air permeable waterproof membrane. With billions of microscopic pores that are too small for moisture to penetrate from the outside, our proprietary waterproof membrane instantly vents the heat and sweat that you generate when you are cycling. It helps reduce the temperature swings your body experiences during physical exertion.



## W&W Diamond

---

Thermally insulated fabric W&W Diamond with a membrane. It is designed for low temperatures and chilly weather. The fabric provides thermal comfort and high elasticity which ensures maximum freedom when riding.

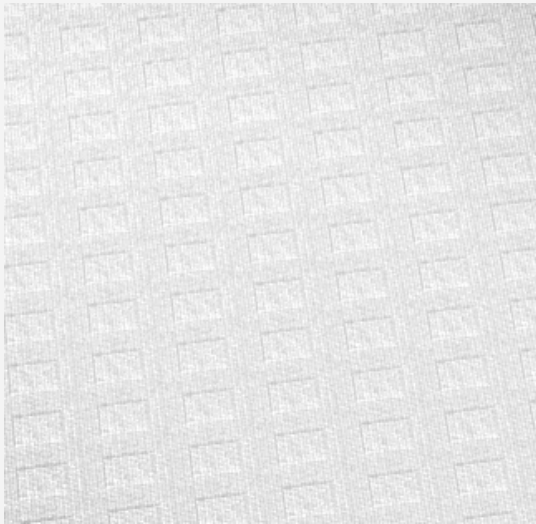


## Goffrato

---

Innovative Italian fabrics Goffrato provides high elasticity and maximal muscle compression. These attributes guarantee free movement when racing or training.





## Verano Flex

In cooperation with world-renowned Swiss textile producer Schoeller®, the shorts were made using a very light and thoroughly breathable fabric called Verano Flex.



## Roubaix

Revolutionary stretchy material containing LYCRA fibers developed for high quality sportswear with UV protection, while keeping your body dry and warm. This fabric has a special antibacterial treatment.



## RainMem X3

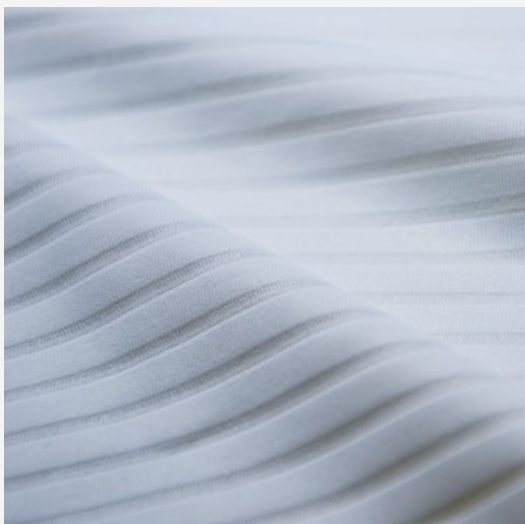
The RainMem fabrics is fully printable cyclewear membrane that is wind and water-resistant as well as highly breathable. Technical parameters of the fabrics are: breathability: 11 000 g / m<sup>2</sup> / 24 hrs, water column: 10 000 mm.



## Spinn

---

Weft-knitted polyester material developed for highly functional cycle wear. Two-layer structure made from lightweight fabrics with the reverse side from special microfiber that effectively transfers the sweat to the top layer. The Spinn material is very breathable and provides a comfortable fit.



## STRIPES

---

Stripes fabric has been specially designed to help reduce air resistance due to its fine-stripe texture. The fabric is also very flexible and perfectly adapts to the body of the cyclist.



## Flanders

---

Very pleasant material used for long-sleeve insulated jerseys with the reverse side that is brushed.





## Microfiber

---

This material is very breathable and at the same time provides reliable protection against wind and rain. Fashionable apparels in microfibres have graceful flow, silk-like feel and are extremely comfortable. Microfiber clothing is not sensitive, retaining its positive qualities after washing or cleaning.



## W&W MISSION FLOW

---

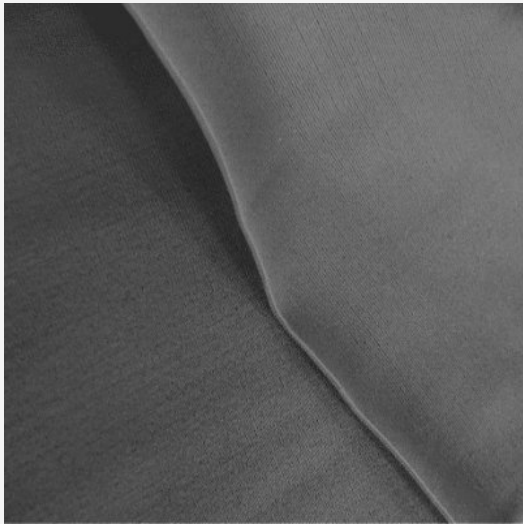
Very lightweight three-layer functional membrane fabric that is wind and water-proof. The top layer of the fabric is very compact and abrasion resistant.



## W&W WINTER FLOW

---

Thermally insulated fabric W&W Winter Plus with a membrane comfortable to chilly weather. The fabric provides thermal comfort and high elasticity which ensures maximum freedom when riding.



## Lycra Power

The Lycra Power fabrics offer even better stretch and recovery power designed to help any cyclist to move and perform at their best, while feeling comfortable. This textile material is a perfect combination of light-weight, breathability, close-fit, shape retention and freedom of movement. In addition, it provides muscle support during bumps and thus prevents early exhaustion.



## ENDURANCE 3D WOMEN

The Endurance 3D pad has been created in a close collaboration with the performance specialist of cycling pads Elastic Interface. It is an ideal choice for those who are looking for an unequalled performing pad designed for long-distance riding.

### Important features:

- 3D anatomic shape achieved thanks to three components joined together for enhanced fit.
- Perforated layer for enhanced air flow and ventilation throughout the whole pad.
- Wide central area with extra density, specifically shaped to fit female anatomy.
- Ultrahigh density inserts of 120/kgm<sup>3</sup> specifically shaped and designed to cushion main pressure points.
- EIT CARBONIUM FLASH material has special channeled structure for enhanced air flow and ventilation.



## ZOOM X WOMEN

Multilevel elastic pad of the ELASTIC INTERFACE TECHNOLOGY® series made in an attractive design and developed to provide a great degree of protection and comfort.

### Important features:

- elastic material from microfiber and polyester fibres for maximum breathability
- dual density construction guarantees a great degree of protection and comfort
- bacteriostatic material
- extremely soft side wings providing freedom of movement and excellent fit
- perforated foam ensuring increased ventilation and quick dry
- specially designed perineal area to preserve blood circulation and to protect the sciatic nerve

# REFERENCES

---

## MATHIEU VAN DER POEL

World cyclocross champion,  
European MTB champion, winner  
of the 2019 Amstel Gold Race.

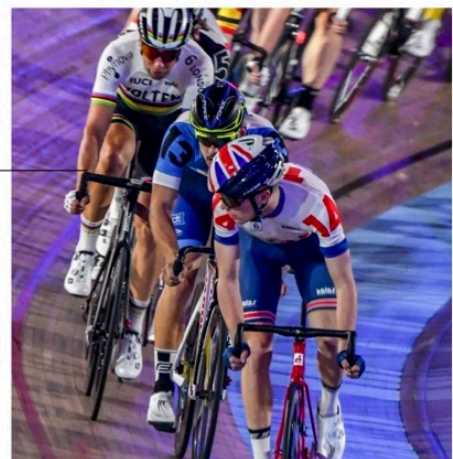


## GREAT BRITAIN CYCLING TEAM

Leading federation renowned for  
cutting-edge innovation leading  
to outstanding performance  
across many disciplines.

## SIX DAY SERIES


The Six Day Cycling series sees the  
world's best track riders battle it out  
over six nights of epic racing.




# CONTACT

---

## **Lenka Mullender**

 +44 014 58 558296

 [lenka.mullender@kalas.co.uk](mailto:lenka.mullender@kalas.co.uk)

 [www.kalas.co.uk](http://www.kalas.co.uk)